

SYNOPSIS OF PROTIST AND ANIMAL CLASSIFICATION FOR ZOO 1114L

(Mostly follows that used in Lytle & Meyer, 2005, but realize that there has been much revision of classifications of some groups, particularly among the protist taxa; do not be surprised when you are asked to learn new classifications when you advance to upper division classes at a 4-year institution.)

PHYLUM Subphylum	CLASS	(Note: Orders & Families Not Listed)	GENUS, SPECIES AND/OR COMMON NAME
---------------------	-------	--------------------------------------	---

NOTE: PROPER SPELLING AND STYLE ARE REQUIRED ON ALL PRACTICAL EXAMS TO RECEIVE FULL CREDIT

KINGDOM PROTISTA

Sarcodina			<u>Amoeba proteus</u> <u>Foraminiferans</u> <u>Radiolarians</u>
Euglenozoa			<u>Euglena</u>
Mastigophora			<u>Trypanosoma</u>
Ciliata (=Ciliophora)			<u>Paramecium</u> <u>Stentor</u> <u>Vorticella</u>
Apicomplexa (=Sporozoa)			<u>Plasmodium</u>

KINGDOM PLANTAE

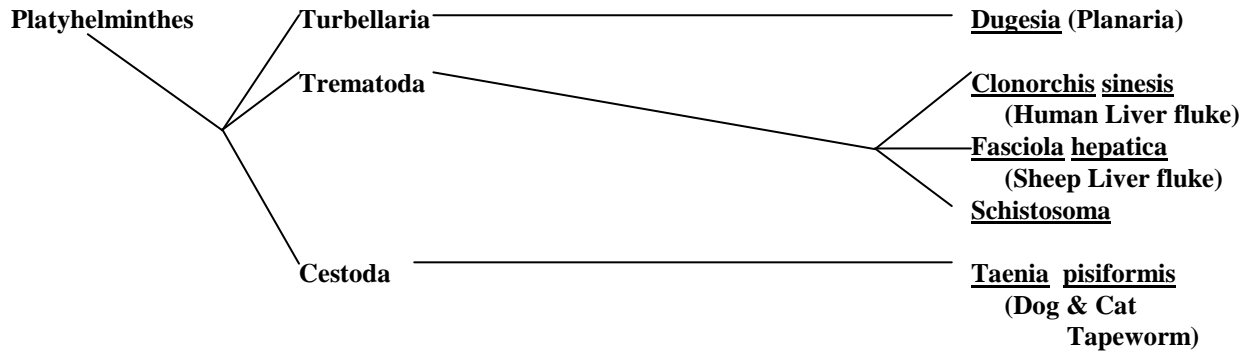
Chlorophyta			<u>Volvox</u>
-------------	--	--	---------------

KINGDOM ANIMALIA

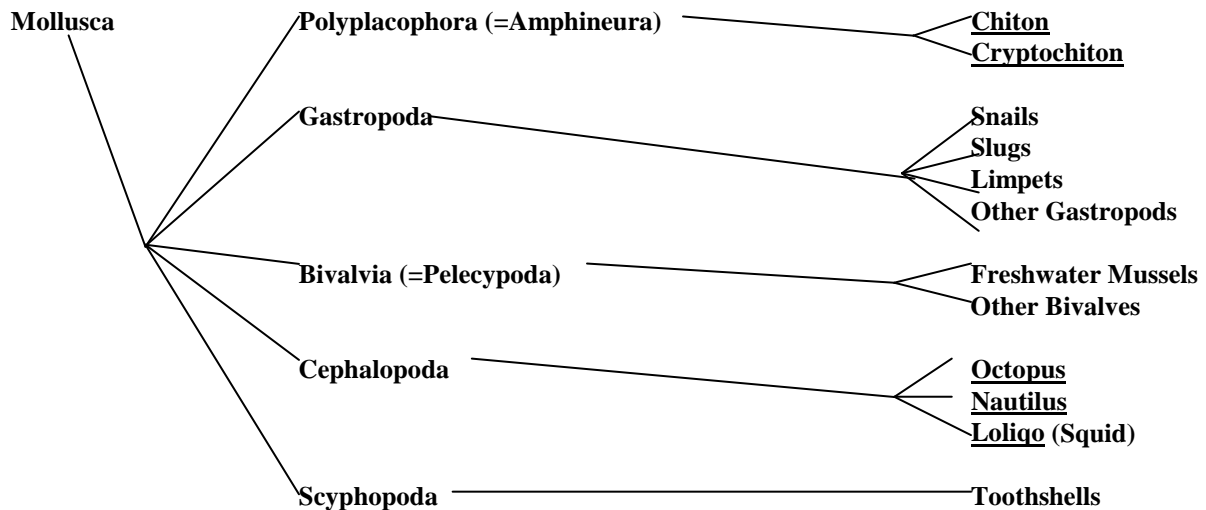
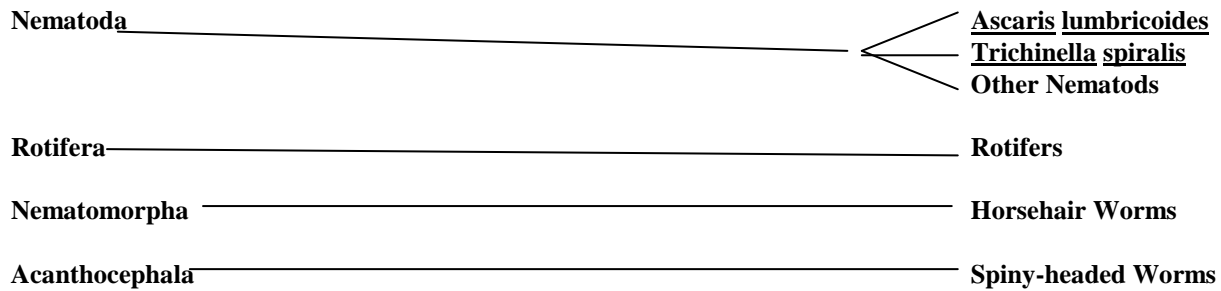
Porifera	Demospongiae		<u>Spongilla</u> Bath Sponges
	Calcispongiae		<u>Scypha (=Grantia)</u>
	Hyalospongiae		Venus's Flower Basket
Cnidaria (=Coelenterata)	Hydrozoa		<u>Hydra</u>
			<u>Obelia</u>
			<u>Gonionemus</u>
			<u>Physalia</u> (Portuguese man of war)
	Scyphozoa		<u>Aurelia</u>
	Anthozoa		<u>Metridium</u> (Sea Anemone)
		Stony Corals	
		Octocorals	
Ctenophora			Comb Jellies or Sea Walnuts

PHYLUM Subphylum	CLASS	(Note: Orders & Families Not Listed)	GENUS, SPECIES AND/OR COMMON NAME
---------------------	-------	--------------------------------------	---

KINGDOM ANIMALIA cont.

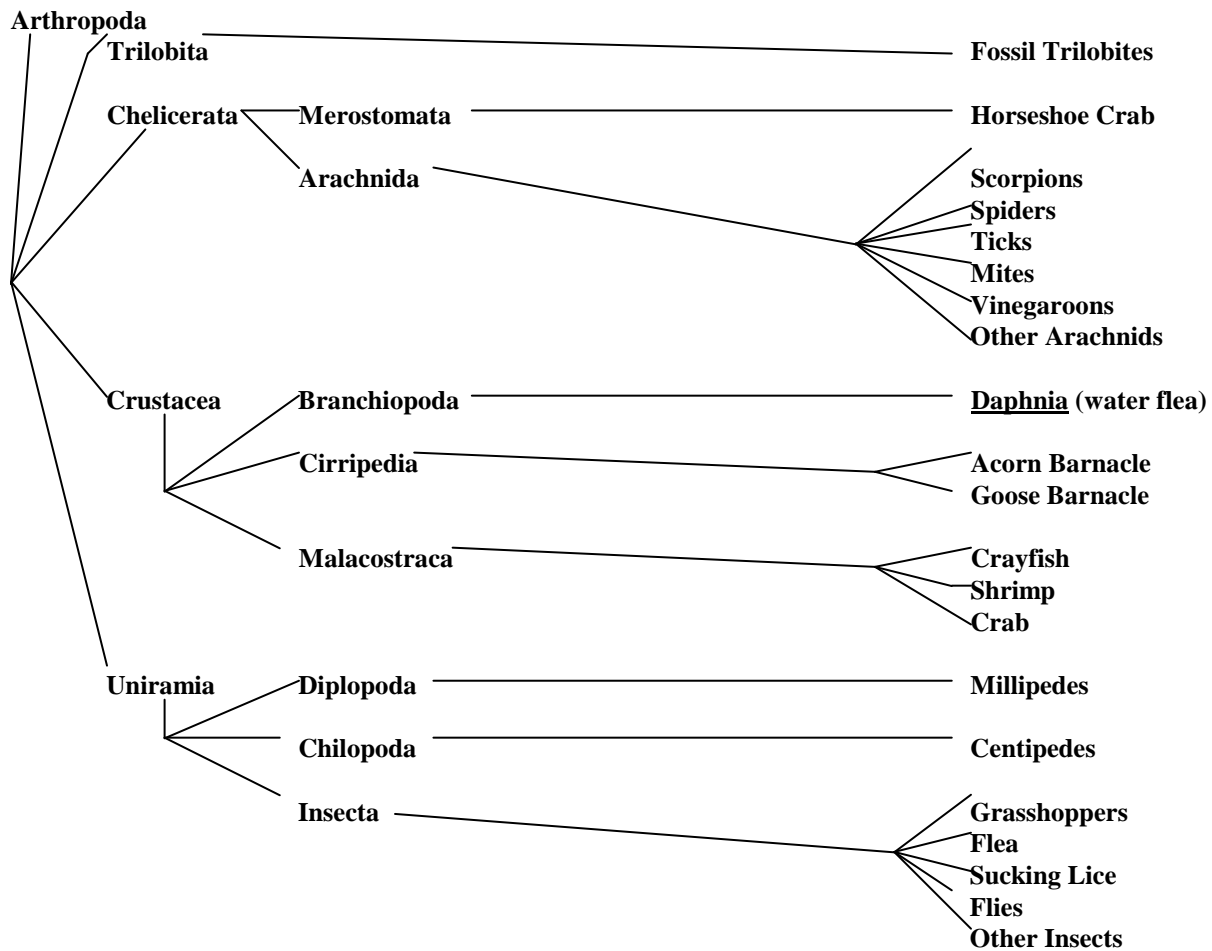
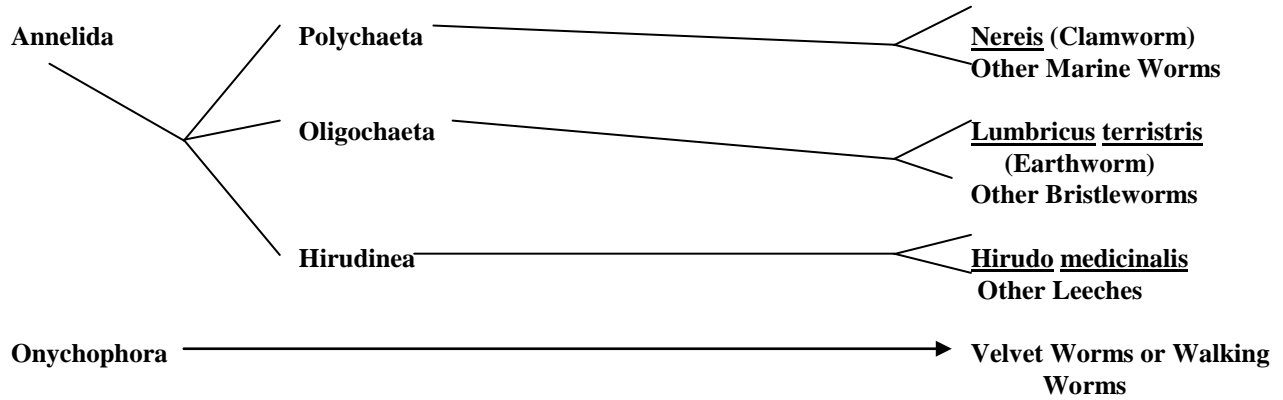


----->END OF TAXONOMY COVERED ON LAB PRACTICAL #1<-----



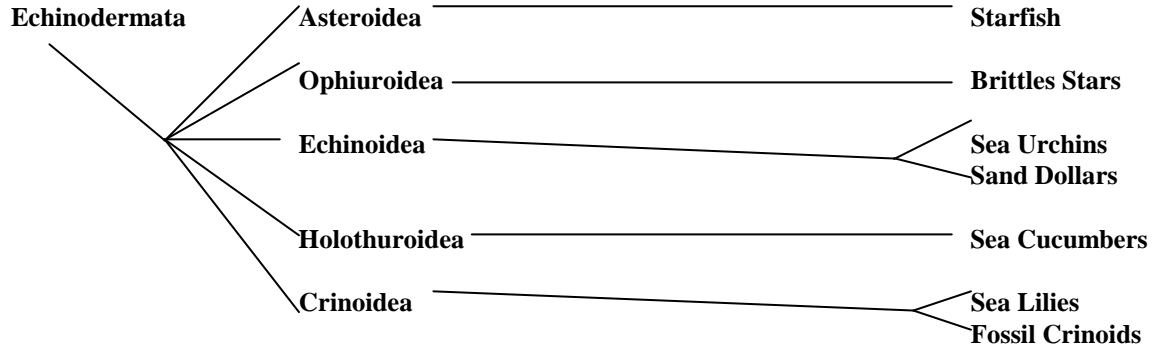
PHYLUM Subphylum	CLASS	(Note: Orders & Families Not Listed)	GENUS, SPECIES, OR COMMON NAME
---------------------	-------	--------------------------------------	--------------------------------------

KINGDOM ANIMALIA cont.

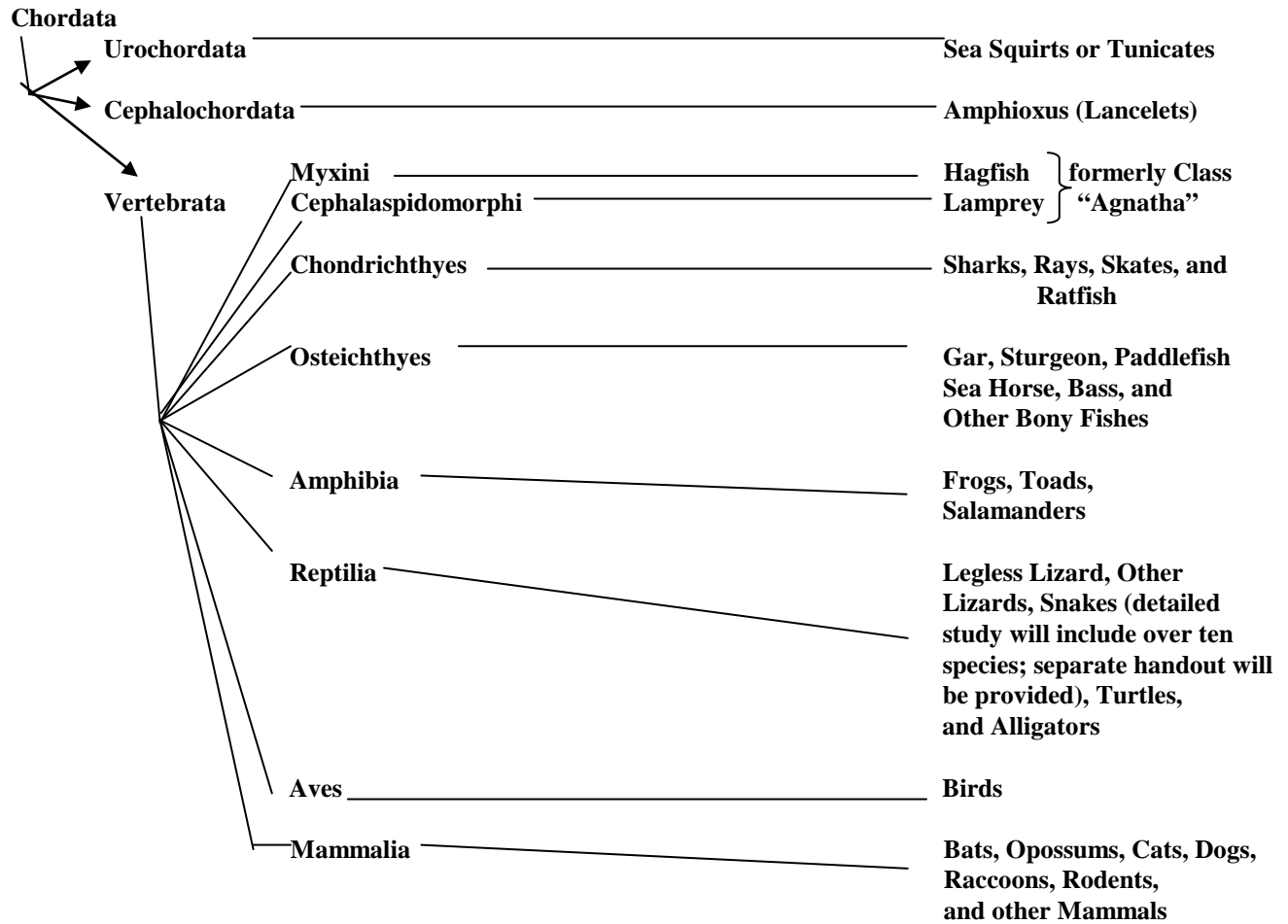


PHYLUM (Subphylum)	CLASS	(Note: Orders & Families Not Listed)	GENUS, SPECIES AND/OR COMMON NAME
-----------------------	-------	--------------------------------------	---

KINGDOM ANIMALIA cont.



----->END OF TAXONOMY COVERED ON LAB PRACTICAL #2<-----



----->END OF TAXONOMY COVERED ON FINAL LAB PRACTICAL (#3)<-----